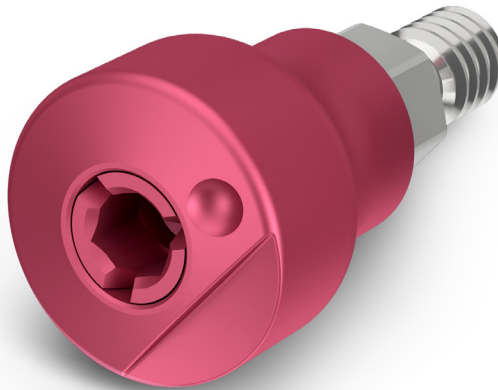
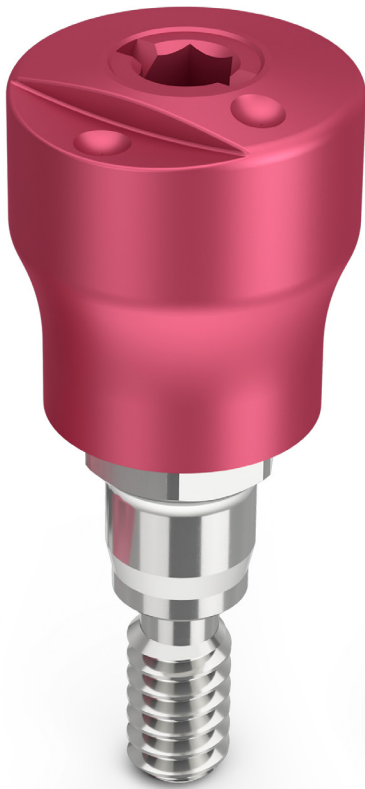


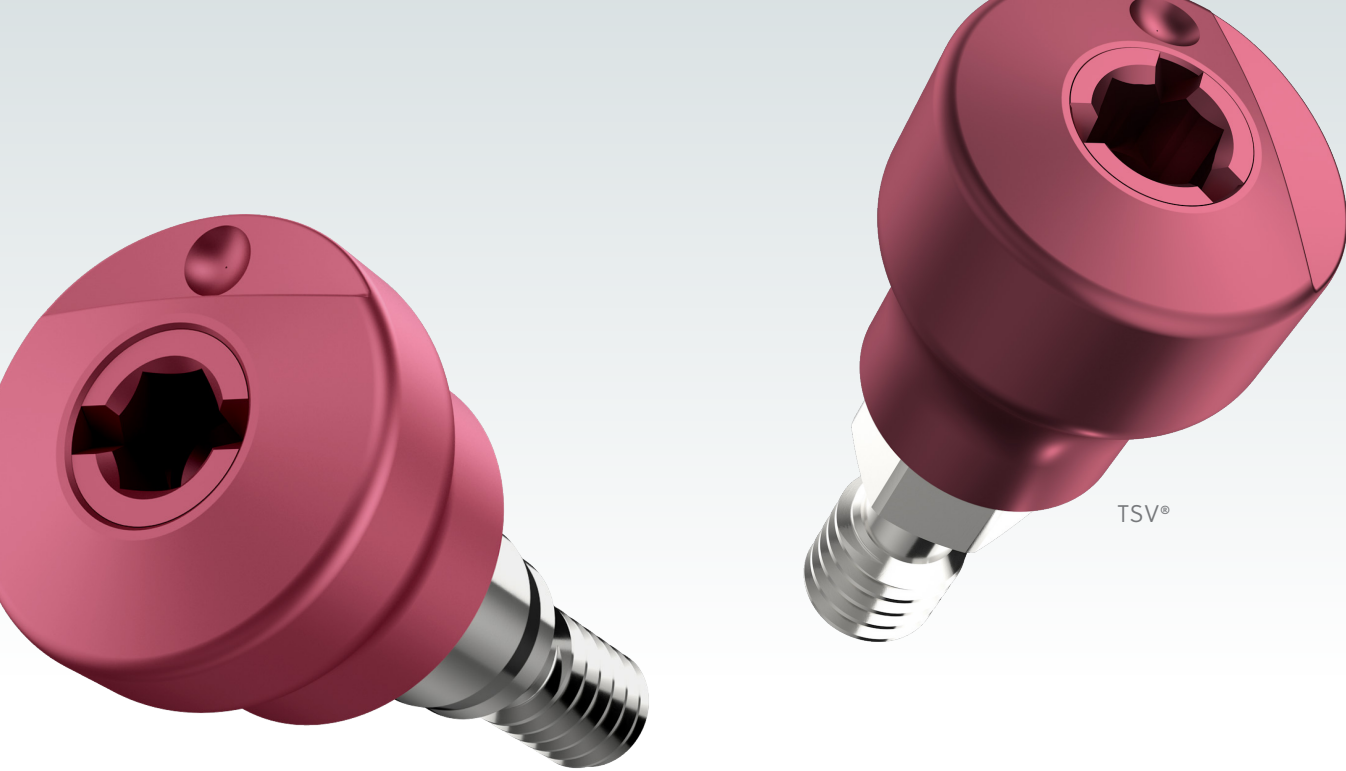


Heal Naturally.
Impress Easily.

Encode[®] Emergence

Impression System





Certain®

TSV®

Designed for Surgical and Restorative Aesthetics and Efficiency

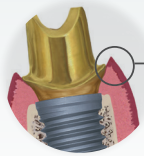
Heal Naturally. Impress Easily.

Encode Emergence technology provides more natural tissue healing for great aesthetics, and easy scanning and impressing for workflow efficiency.

- Easy, efficient and proven Encode technology with contemporary emergence profile designs, intuitive codes and pink matte appearance.
- Eliminate the healing abutment and impression coping or scan body swapping process, while delivering soft tissue healing with natural emergence profile.
- Patients have a better experience and a beautiful aesthetic outcome as compared to traditional procedures with impression copings.

Heal Naturally

Patient Aesthetics Through Hard-and Soft-Tissue Preservation



Oral Mucosa



Encode® Emergence Healing Abutment



Maintain Tissue Health

- Intact peri-implant mucosa is required for oral health and successful dental Implant integration and maintenance.¹
- Adherent peri-abutment mucosa is credited with reducing and limiting both microbial and oral cavity content through the sulcus to the implant microgap region.

Clinical Relevance

Studies show:

- Multiple abutment removals (dis/reconnect) negatively affect peri-abutment mucosal and contributes to loss of alveolar crestal bone.²
- Crestal bone resorption leads to soft-tissue recession and reduced aesthetics.^{3,4}

Reduced Abutment Swaps

- Design reduces need for multiple abutment removals, preserving peri-abutment interface and maintaining sealing function.
- Unique codes on occlusal surface provide design and milling information, eliminating need for an impression coping.



Aesthetic Outcome For The Patient

- One supragingival impression leads to the delivery of the definitive prosthesis.

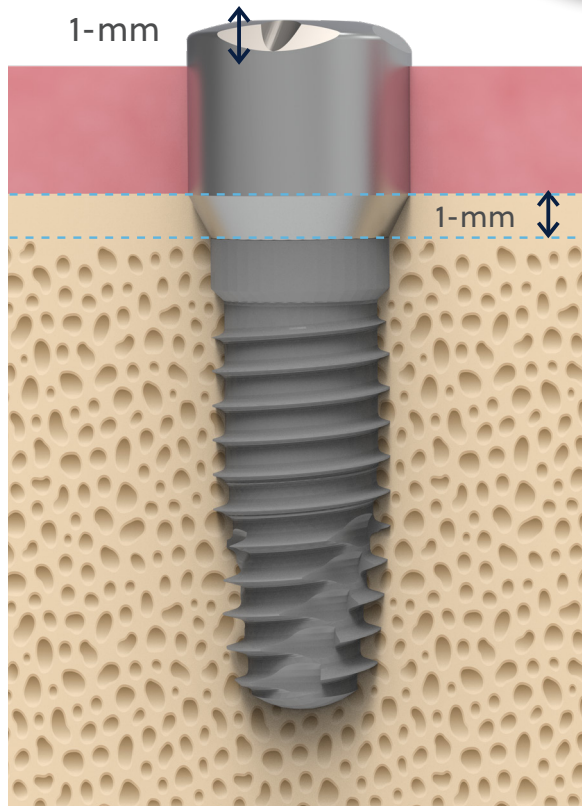
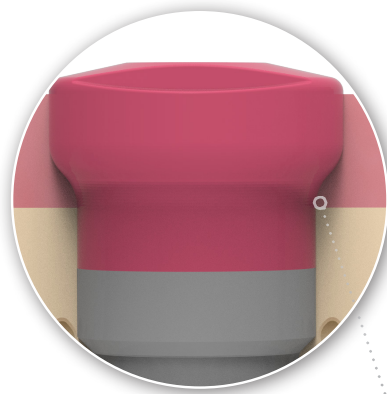


Natural Tissue Healing

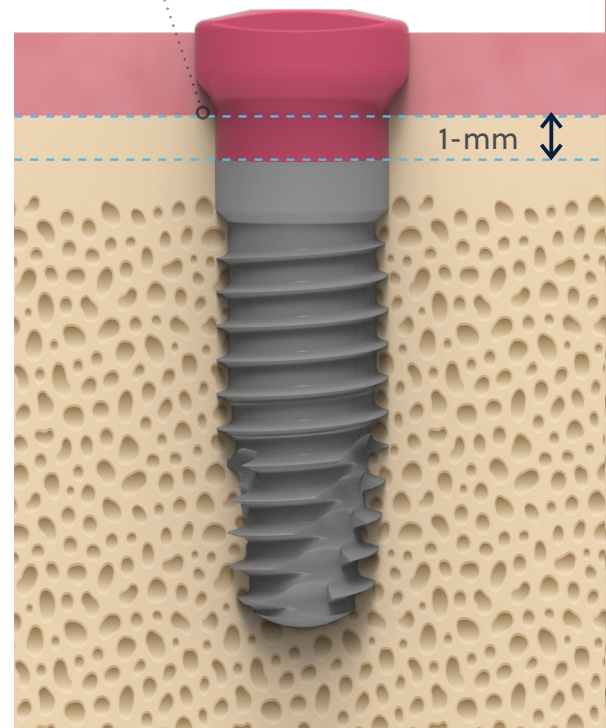
Natural Emergence

- Gradually rising emergence profiles shape and facilitate natural tissue healing.
- Mitigates bone profiling when an implant is placed no deeper than 1-mm below the bone crest.
- Healing abutments are available in a range of emergence profile diameters and in three varying heights: 3, 5, and 7-mm.

MITIGATES THE NEED FOR
BONE PROFILING



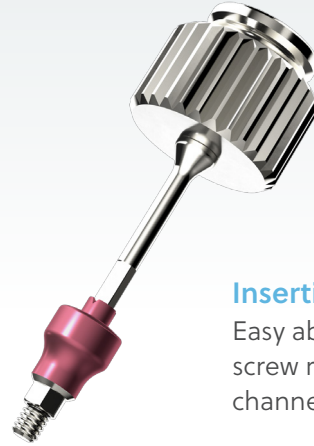
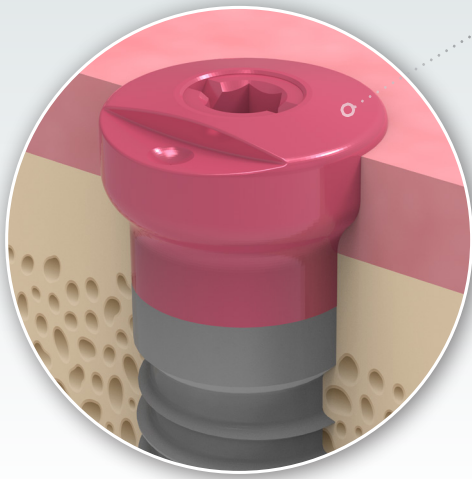
4-mm (H)
Legacy Encode®



3-mm (H)

Tissue-Level Scan or Impression

Intraoral scan or traditional impression possible when abutment occlusal is clear and above soft-tissue.

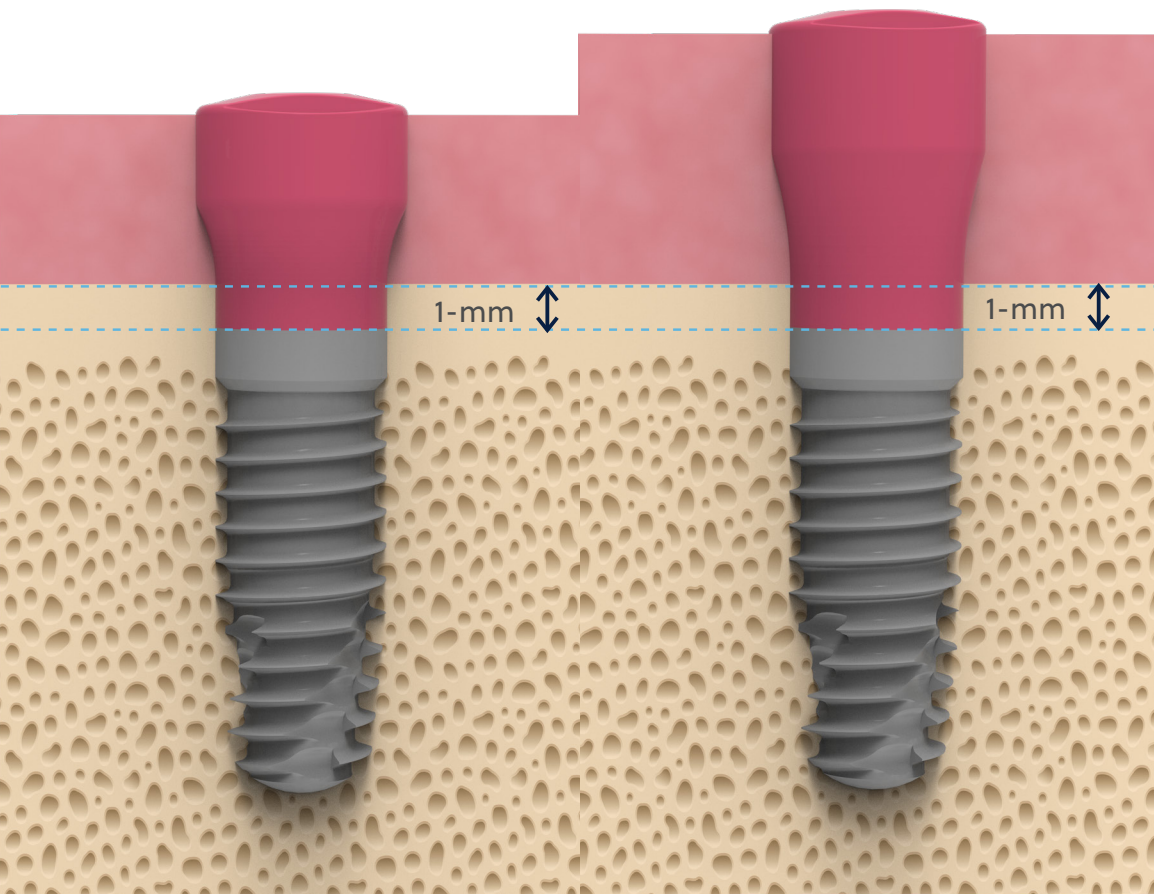


Insertion and Removal

Easy abutment insertion and removal as screw remains engaged through screw channel internal threads.

Color and Finish

The pink matte appearance closely matches the gingiva's color for aesthetics results after surgery, and reduces intraoral scan reflection for clear scan images.



5-mm (H)

7-mm (H)

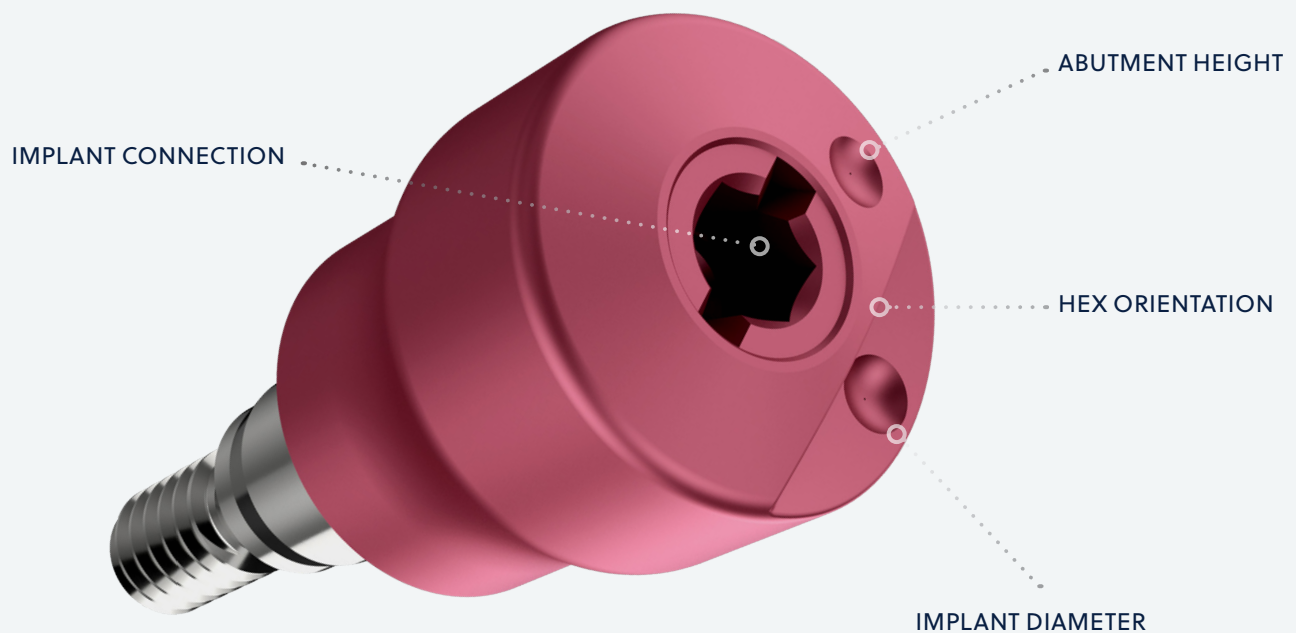


Impress Easily

Simplified Intraoral Scans or Traditional Impressions for Aesthetics

Streamlined Process

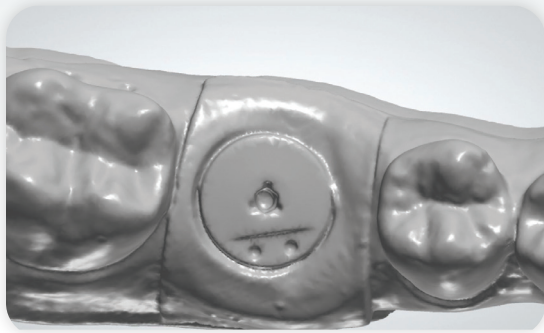
By eliminating the need for impression copings and conventional impression materials, the process is streamlined and the patient experience is improved.



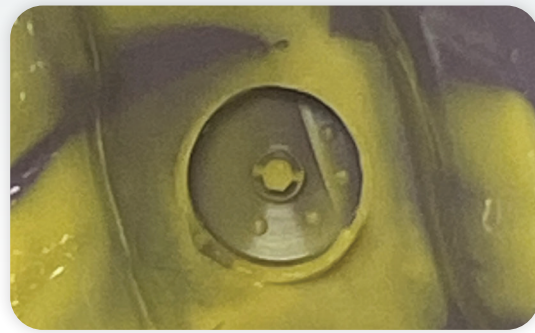
Intuitive code scheme provide 3D information for CAD/CAM restorative workflow

Designed for Flexibility

Take a digital or traditional impression.



① Intraoral Scanning



② Traditional PVS Impression

Benefits for the Patient

Comfort

There is no need to use impression copings, resulting in a less invasive impression procedure for improved patient comfort.

Fewer Visits

The intraoral scan can be taken by the specialist at the surgical release visit, eliminating a restorative appointment and resulting in less visits to the dentist's office compared to traditional procedures.

Aesthetic Outcomes

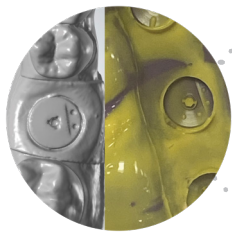
Abutments designed specifically for the patient's anatomy, for better aesthetic outcomes compared to traditional non-digital procedures.



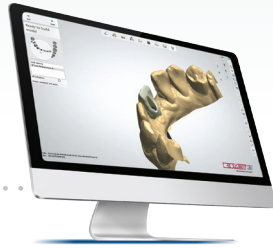
Customized Restorative Solutions

Workflow Options

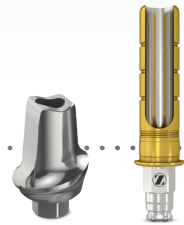
Lab Designed Abutments Workflow



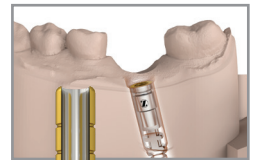
ZimVie Designed Abutments Workflow



Have an Encode Empowered Lab design your case.



ZimVie mills a CAD/CAM abutment or ships Flex or Express ti-base.



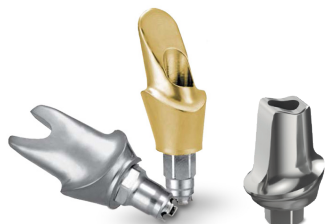
Have your laboratory submit your case for a ZimVie designed abutment or an Express and Flex, and 3D printed model.



ZimVie mails a CAD/CAM abutment or ships a Flex or Express ti-base with a 3D printed model with an analog.



Results: Highly Aesthetic ZimVie Definitive Abutments for single or multi-unit restorations.



ZimVie CAD/CAM ABUTMENTS



ZimVie FLEX AND EXPRESS TI-BASES

Practice Growth

Through Better Patient Care



Efficient Treatment Solutions that optimize the workflow for the entire team

Surgeon

- Cutting edge technology creates an improved and simplified treatment process differentiating the practice for referring dentists and patients.

Laboratory

- Streamlined workflows may lead to increased crown and bridge business.
- No need to create a cast, which results in fewer steps in the treatment process, reducing overhead.
- Unique branding opportunity may grow the volume of your business.

Restorative Clinician

- No implant-level impressions are required—minimizing chairtime compared to traditional non-encode procedures.
- Increased patient satisfaction due to an easier and more comfortable impression procedure compared to traditional non-encode cases.

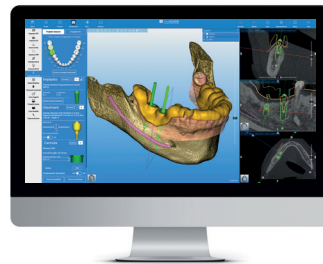


Your ZimVie Path of Digital Dentistry

Suite of connected solutions allows you to choose your course for a precisely positioned, esthetically restored ZimVie Implant.

Provides

- Diverse solutions for surgical planning, fully guided placement and advanced design of restorative components.
- The ability to plan and design yourself or outsource to your chosen lab or one of ZimVie's skilled partners.
- The choice of Encode compatible implants and your preferred customized workflow for a healthy patient smile!



Scan

Use an iTero Element® intraoral scanner to improve the patient experience whenever an impression is taken.

Plan

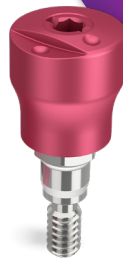
The RealGUIDE™ Software Suite offers everything you need for precise planning and predictable implant placement.

Guide

Implant Concierge is a web-based platform that acts as your Virtual Treatment Plan Coordinator™ – the one-stop shop for your guided surgery needs.



3-in-1
Healing Abutment
Impression Coping
Scanbody



Place

Take the complexity and inaccuracies out of guided surgery by using either the RealGUIDE™ Z3D Guided Surgery Kit or the Navigator™ System for guided surgery.



Heal and Scan

Naturally shape the soft tissue and efficiently process the final restoration with the easy to use the Encode® Emergence Impression System.



Restore

Select between CAD/CAM abutments and Flex and Express Ti-bases for the final custom restoration, designed to match the patient's anatomy, producing a natural emergence profile through the soft tissue.

References

- ¹ Schupbach P. The defense architecture of the human peri-implant mucosa: a histological study. J Prosthet Dent. 2007 Jun;97(6 Suppl):S15-25.
- ² Abrahamsson. 1997 Journal of Clinical Periodontology 24: 565-572. The mucosal barrier following abutment dis/reconnection. An experimental study in dogs.
- ³ Hartman G. Initial implant position determines the magnitude of crestal bone remodeling. JOP 2004 Apr; Vol 75, No. 4.
- ⁴ Hartlev J, et al. Immediate placement and provisionalization of single-tooth implants involving a definitive individual abutment: A clinical and radiographic retrospective study. COIR 2012 Mar; DOI: 10.1111/j.1600-0501.2012.02442.



Contact us at 1-800-342-5454
or visit ZimVie.com

ZimVie Dental

4555 Riverside Drive
Palm Beach Gardens, FL 33410
Phone: +1-561-776-6700
Fax: +1-561-776-1272

Unless otherwise indicated, as referenced herein, all trademarks and intellectual property rights are the property of ZimVie Inc. or an affiliate; and all products are manufactured by one or more of the dental subsidiaries of ZimVie Inc. (Biomet 3i, LLC, Zimmer Dental, Inc., etc.) and marketed and distributed by ZimVie Dental and its authorized marketing partners. Zimmer Biomet is an authorized distributor of iTero Products which are manufactured by Align Technology, Inc. Invisalign, iTero, iTero Element, the iTero logo, among others, are the trademarks and/or service marks of Align Technology, Inc. or one of its subsidiaries or affiliated companies and may be registered in the U.S. and/ or other countries. For additional product information, please refer to the individual product labeling or instructions for use. Product clearance and availability may be limited to certain countries/regions. This material is intended for clinicians only and does not comprise medical advice or recommendations. Distribution to any other recipient is prohibited. This material may not be copied or reprinted without the express written consent of ZimVie.

ZV0109 REV B 11/22 ©2022 ZimVie. All rights reserved.

