

# parkell today

BIOACTIVE EDITION



## Predicta®

BIOACTIVE

bulk-fill

core build-up

desensitizer

*Stimulating  
Change for Better  
Patient Outcomes*



## Dual-Cure Composite for Core Build-Ups and Post Cementations

Optimized for placement in teeth that require core build-ups, with or without posts, prior to the prepping, impressing, fabrication, and cementation of a crown.

**Predicta<sup>®</sup> Bioactive Core is bioactive and releases calcium and phosphate ions and releases and recharges fluoride ions to stimulate mineral apatite formation and remineralization at the material-tooth interface**

- ▶ Dual-cure for unlimited depth of cure
- ▶ Zirconia added to improve the prepping experience
- ▶ Indicated for core build-ups and as a post cement
- ▶ Strong and stable support for crowns made of zirconia, porcelain,
- ▶ PFM and metal
- ▶ Multiple viscosities

**Bioactivity** is known in the field to equate to stronger bonds between the restoration and tooth, penetration and filling of micro-gaps, reduction in sensitivity, guard against secondary caries, and the sealing of margins against microleakage.



### ITEM # PRODUCT

ITEM #	PRODUCT	
S600	Flowable - White Shade	<b>Predicta<sup>®</sup> Bioactive Core Build-Up Kits</b> Include (1) 5 ml hand-held syringe, (10) 17-gauge mixing tips and (10) 19-gauge mixing tips
S601	Flowable - Tooth Shade	
S605	Stackable - White Shade	
S606	Stackable - Tooth Shade	

### Accessories & Refills

S620	5 ml Dispensing Gun
S621	17-Gauge Dispensing Tip Refill (30 pcs)
S622	19-Gauge Dispensing Tip Refill (30 pcs)



## Universal, Dual-Cure Composite for All Your Restorative Needs

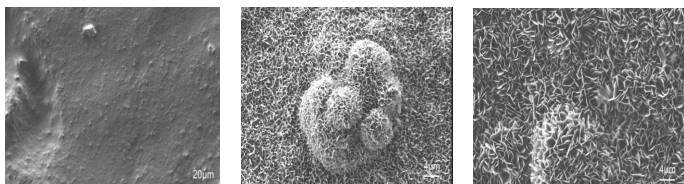
A dual-cure composite that can be used to fill any size cavity preparation, all the way up to the occlusal surface, without any need for additional layering. From large Class V's to four surface posterior restorations, there are no limits to what you can do with Predicta® Bioactive Bulk.

**Predicta® Bioactive Bulk is bioactive and releases calcium and phosphate ions and releases and recharges fluoride ions to stimulate mineral apatite formation and remineralization at the material-tooth interface**

- ▶ Dual-cure for unlimited depth of cure
- ▶ Fluorescence for a more natural appearance
- ▶ Multiple viscosities and shades
- ▶ Highly radiopaque
- ▶ Indicated for Class I, II, III, IV, and V restorations
- ▶ Strong and durable to withstand occlusal forces
- ▶ Highly polishable
- ▶ Nanohybrid versatility



## Mineral Apatite Formation



SEM Analysis of Predicta™ Surface after 28 Days in Simulated Body Fluid (SBF). Left: Predicta Control, no SBF. Center: Predicta, 7 days in SBF. Right: Predicta, 28 days in SBF. Image courtesy of Uppsala University, Sweden.



ITEM # PRODUCT

ITEM #	PRODUCT	
S615	Bulk-Fill - A1/B1 Shade	<b>Predicta® Bioactive Bulk-Fill Kits</b> Include (1) 5 ml hand-held syringe and (20) 17-gauge mixing tips
S616	Bulk-Fill - A2/B2 Shade	
S610	Bulk-Fill (LV) - A1/B1 Shade	
S611	Bulk-Fill (LV) - A2/B2 Shade	

### Accessories & Refills

S620	5 ml Dispensing Gun
S621	17-Gauge Dispensing Tip Refill (30 pcs)
S622	19-Gauge Dispensing Tip Refill (30 pcs)

# Predicta® desensitizer

## BIOACTIVE

### Fast and Effective Relief from Dentin Hypersensitivity

**NEW!** Predicta® Bioactive Desensitizer is changing the way clinicians treat dentin hypersensitivity by using the elements that are naturally found in the tooth, (calcium and phosphate) and restoring them to the tooth in the form of hydroxyapatite plugs that immediately start forming in the dentinal tubules upon application. Then, over the next several weeks, even after the patient has left the office, these plugs continue to penetrate further down the tubules to create an expanded zone of protection.

Predicta Bioactive Desensitizer doesn't stop there. An additional layer of mineralization also forms atop the dentinal tubules as a result of the ongoing release of calcium and phosphate ions. This extra

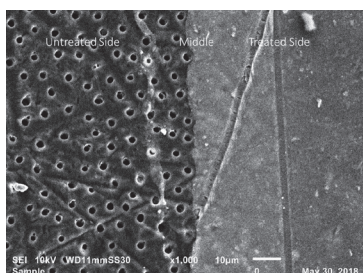
layer broadens the seal that protects the pain-sensing A-delta nerve fibers in the pulp from being stimulated.

### Treats Dentin Hypersensitivity Due to:

- ▶ Exposed roots after perio-surgery
- ▶ Bleaching procedures
- ▶ Scaling or root planing
- ▶ Hypersensitivity due to
- ▶ gingival recession

### Easy-to-Use, Easy-to-Apply!

This syringe dispensed gel requires no mixing. Simply remove any calculus or plaque from the treatment site, blot the area dry with a cotton roll or gauze and you are good-to-go.



Comparison of untreated dentinal tubules (left), with tubules that have been covered with a dense layer of Predicta® Bioactive Desensitizer (right). Images courtesy of University of Washington School of Dentistry.



ITEM # PRODUCT

S626	<b>Single Syringe Kit</b> (1) 3 ml syringe, (10) applicator tips, (15) applicator brushes, (1) mixing well	<b>Predicta® Bioactive Desensitizer Kits</b>
S625	<b>Three Syringe Kit</b> (3) 3 ml syringes, (30) applicator tips, (50) applicator brushes, (1) mixing well	

Accessories & Refills

S390	<b>Dispensing Tip (Pre-Bent/Yellow) Refill</b> (30 pcs)
S391	<b>Fine (1.5mm) Micro Brush Applicator Refill</b> (100 pcs)

# What Clinicians are Saying about Predicta® Bioactive



In a recent episode of *Inside Dentistry's* Product Talk, **Dr. Olitsky, DMD** shares his experience using Predicta® Bioactive

Bulk and talks about the ease of use, aesthetics and benefits of bioactivity.



Scan code to watch the video



Hear **Sherri Lukes RDH, MS, FAADH** discuss the multiple benefits of using Predicta® Bioactive Desensitizer for both patient and clinician.



Scan code to watch the video



Take a look at this *Dental Product Shopper* article, that features **Dr. Cavanaugh, DMD**, an early adopter of Predicta® Bioactive Core who, after a year of using it, has had “nothing but success” with the product.



Scan code to view the article



“Predicta Desensitiser impressed us from the very first use. The features that excited us were the compatibility with adhesive systems adhesive systems, the gel formulation for easy application, and the colour which allows it to be clearly visible on the surfaces to be treated for precise application.”

*Prof. Loris Prosper, DDS and Dr. Tiziano Galizzi, DDS - Italy*

To learn more, visit [Parkell.com](http://Parkell.com) or contact your local authorized Parkell distributor

# What Clinicians are Saying about Predicta® Bioactive

---



“Our dental practice is growing more and more delighted with Predicta Bulk. I think Parkell came up with an excellent product. We like that it is chemically cured, you know it is hard all the way even if you use a thick layer. Other bulk material has a limited depth of cure. The colour match is surprisingly good, I didn't expect that.”

*Dr. Manouchehr Kiaei, DDS - Sweden*

**Scan codes for a full product evaluation and clinical tips**



“Our objective is always simplifying the procedure and limit the use of materials. Predicta Core meets such needs and those of our patients, who want high quality but fast restorations.”

*Dr. Giuseppe Chiodera, Styleitaliano Honorary Member*

**Scan code for a full product evaluation and clinical tips**



“Predicta Desensitizer is very effective, it works very well immediately blocking the sensitivity for several days and with a second application it dramatically reduces sensitivity in the long term.”

*Dr. Consuelo Sanavia, Dental Hygienist - Italy*



The ease with which I can treat my patients' sensitive teeth by using Predicta desensitiser has positively surprised me. The gel is incredibly easy to use and very gentle on the patient. It gives immediate relief from hypersensitivity that lasts for a long time. The dental hygienists in our practice also enjoy using it on their patients.”

*Dr. Sjobbe Besseling, DDS, Netherlands*

---

For information and orders within Europe contact [infoeurope@parkell.com](mailto:infoeurope@parkell.com), tel. +46 8 506 505 75