



Rebilda® DC

Rebilda® Post System

Rebilda® DC

DUAL-CURING CORE BUILD-UP AND POST LUTING SYSTEM

Nowadays, modern composite and adhesive systems enable the reconstruction of severely damaged teeth, even if the clinical crown has been lost completely. The demands on the materials used are very high as they must dependably bond to the dental hard tissue and, if used, to a root post. Moreover, the build-up material should have a similar hardness to dentine, in order to simplify the later preparation and in order for the build-up to behave like a natural tooth when under stress.

Your advantages with Rebilda DC at a glance:



Dual-curing

- Even under unfavourable conditions for light polymerisation, the material cures **reliably with high final strength**.
- **Also usable in the root canal:**
Should you wish to insert a root post for the build-up of a severely damaged tooth, the use of a single material for both the core build-up and bonding of the root post is beneficial for your workflow. Boundary surfaces between different materials, which could reduce the stability of the build-up, are thus avoided. Because the ideal core build-up forms a so-called **monoblock** of the components used. This monoblock is equivalent in its physical properties to dental hard tissue and responds to stress in the same way.



Flowable consistency – perfect adaption

- **Reliable wetting**, for example, in a narrow cavity or the root canal
- At the same time, the material is **stable enough** for individual application in layers, even without a matrix.
- Rebilda DC's dual-curing enables fast (< 5 seconds) polymerisation of every layer. The next layer can then be applied immediately. Even reconstructions with a large area and volume can thereby be realised in a short time, also without using a matrix.

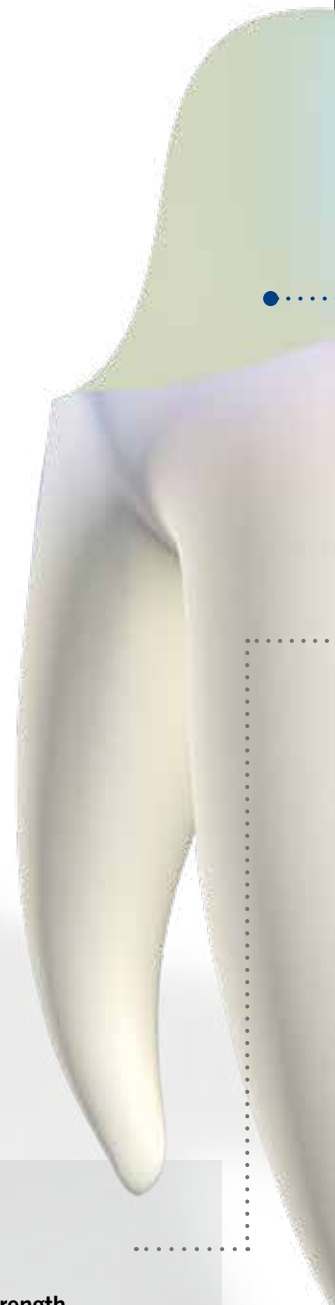


Dentine-like properties

- Rebilda DC **cuts like dentine** and also has the requisite degree of hardness, making preparation easy, while the final build-up behaves like the natural tooth under load.

Rebilda Post – the post for the root

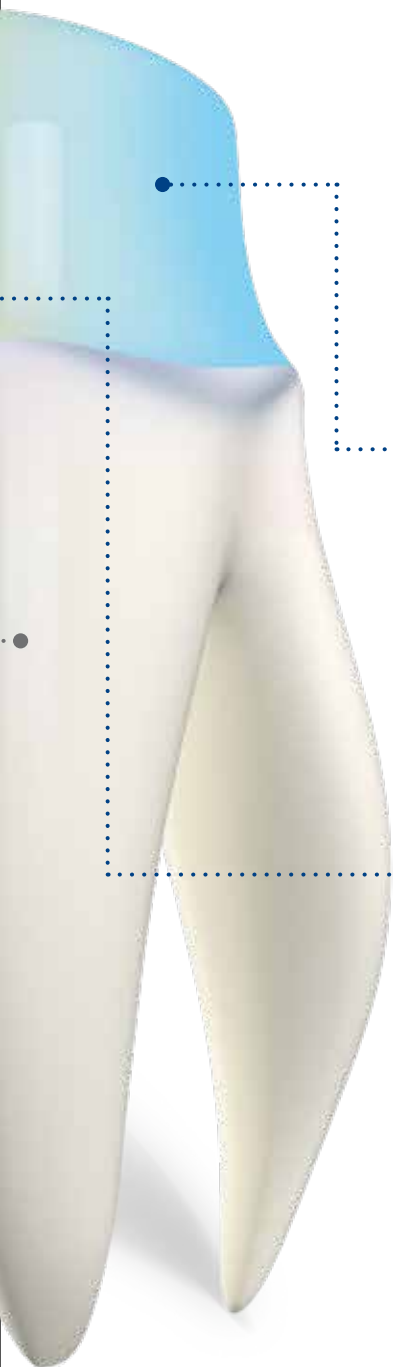
- Glassfibre-reinforced composite root post with a **radiopacity of 350 %** aluminium equivalent value.
- The embedding of glassfibres in the composite matrix leads to **high fracture resistance and flexural strength with elasticity**. This distributed the occurring forces to the surrounding dental hard tissue, without causing any punctual force peaks in the tooth root.



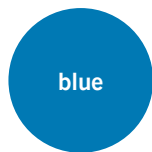
Rebilda® DC fluorescent

FLUORESCENCE ACTIVATED BY UV-A LIGHT

With the dual-curing, composite-based Rebilda DC fluorescent core build-up and post luting system, VOCO is bringing a new member of the Rebilda family onto the market. Now a unique fluorescent version has been added to the existing dentine, white and blue shades, demonstrating once again VOCO's ability to innovate.



Rebilda DC



blue

contrasting shade
to tooth structure



white

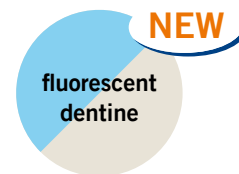
aesthetic contrast
to dentine



dentine

for aesthetic
restorations

Rebilda DC fluorescent



fluorescent
dentine

both contrast to the tooth
shade and aesthetic

Visible for the dentist:

Rebilda DC fluorescent is the only material for core build-up and luting of root posts with activatable fluorescence. The material fluoresces and becomes visible under UV-A light. This means that excess material and build-up margins are clearly recognisable, especially at deep subgingival levels, which makes core build-up much easier for the practitioner.



Build-up fillings with Rebilda DC fluorescent under UV-A light

Aesthetic for the patient:

With Rebilda DC fluorescent, your patient benefits from a natural appearance, because the material is dentin-shaded under daylight and is therefore ideal for highly aesthetic restorations.



Build-up fillings with Rebilda DC fluorescent in daylight



Rebilda DC is available in a handy QuickMix syringe (10 g) and as a cartridge (50 g).

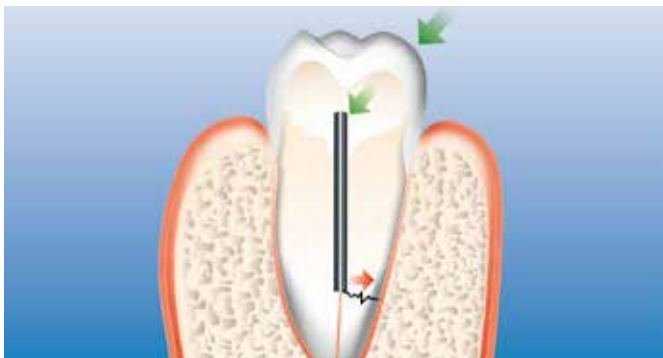
Rebilda® DC · Rebilda® Post

SYNERGY IN CORE BUILD-UP RESTORATIONS

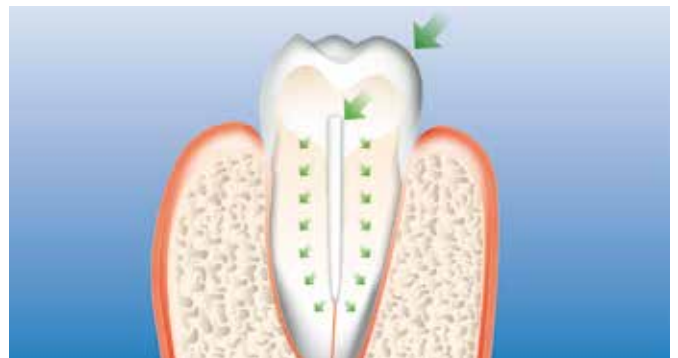
All components needed for a stress-free coronal build-up in a maximum of five steps, with or without root post, are contained in the Rebilda Post system set and Rebilda Post system set II:

In addition to Rebilda DC as a luting and build-up composite, the dual-curing self-etch bonds Futurabond DC and Futurabond U are also included:

Fast application, the additional Endo Tim application aids for the root canal, reliable polymerisation even without light and high adhesion values make these modern adhesives the ideal component of the Rebilda Post System Sets. In addition, there is the glassfibre-reinforced Rebilda Post composite root canal post with exactly adapted root canal drills and the high-strength adhesive silane Ceramic Bond, which further strengthens the bond between Rebilda DC and Rebilda Post.



Metal post – danger of root fracture



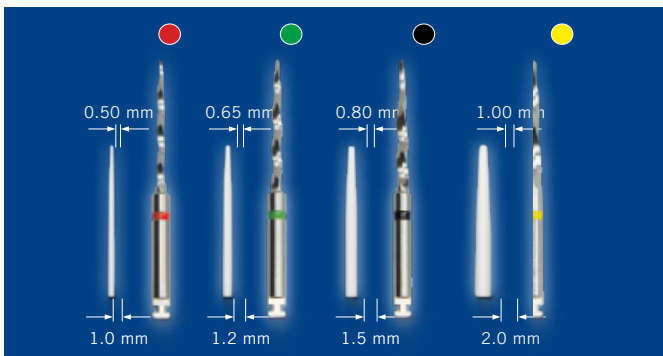
Rebilda Post – physiological distribution of force



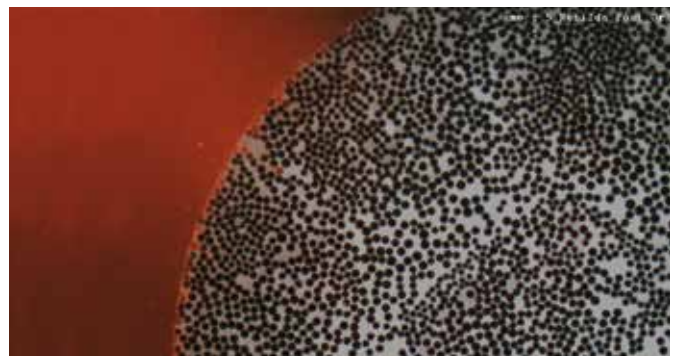
Endotip – direct application in the root canal



High radiopacity of Rebilda Post



Rebilda Post – four sizes with coordinated burs



Dense distribution of glass fibres in the resin matrix in Rebilda Post (CLSM imaging)

Priv. Doz. Dr. A. Braun, University of Bonn

Prof. Dr. D. Behrend, University of Rostock

Rebilda® DC · Rebilda® Post

CLINICAL APPLICATION



Tooth 11 requiring therapy



Insufficient build-up with composite



Canal opening with root-canal filling



Root-canal filling with marginal integrity, up to the apex



Space for the post, here \varnothing 1.5 mm



Fitting the post



Inserting Futurabond DC into the root canal



Applying Futurabond DC to the residual tooth substance



Inserting Rebilda DC into the root canal



Rebilda Post inserted into the root canal



Polymerisation



Continuing the build-up with Rebilda DC



Rebilda DC – build-up before preparation



Inspection of the built-up tooth 11



Prepared build-up – ready for impression

Rebilda®

PRODUCT INFORMATION



Presentation of Rebilda® DC

- REF 1395 Set cartridge 50 g dentine, Futurabond DC bottle 4 ml each liquid 1 and 2, mixing tips type 12, dispenser type 3, intraoral tips type 3, accessories
- REF 1396 Cartridge 50 g dentine, mixing tips type 12, intraoral tips type 3
- REF 1397 Cartridge 50 g blue, mixing tips type 12, intraoral tips type 3
- REF 1398 Cartridge 50 g white, mixing tips type 12, intraoral tips type 3
- REF 1402 Set QuickMix syringe 10 g dentine, Futurabond DC bottle 4 ml each liquid 1 and 2, mixing tips type 11, intraoral tips type 4, accessories
- REF 1403 QuickMix syringe 10 g dentine, mixing tips type 11, intraoral tips type 4
- REF 1404 QuickMix syringe 10 g blue, mixing tips type 11, intraoral tips type 4
- REF 1405 QuickMix syringe 10 g white, mixing tips type 11, intraoral tips type 4

Presentation of Rebilda® DC fluorescent **NEW**

- REF 1399 Cartridge 50 g fluorescent dentine, accessories
- REF 1406 QuickMix syringe 10 g fluorescent dentine, accessories

Presentation of Rebilda® Post

- REF 1770 Set 5 posts each of (ø 1.2 mm, ø 1.5 mm, ø 2.0 mm), 1 drill each of (ø 1.2 mm, ø 1.5 mm, ø 2.0 mm)
- REF 1775 Post 10 (ø 1.0 mm), 5 pcs.
- REF 1772 Post 12 (ø 1.2 mm), 5 pcs.
- REF 1773 Post 15 (ø 1.5 mm), 5 pcs.
- REF 1774 Post 20 (ø 2.0 mm), 5 pcs.
- REF 1780 Drill 10 (ø 1.0 mm), 1 pcs.
- REF 1777 Drill 12 (ø 1.2 mm), 1 pcs.
- REF 1778 Drill 15 (ø 1.5 mm), 1 pcs.
- REF 1779 Drill 20 (ø 2.0 mm), 1 pcs.

Presentation of Rebilda® Post System

- REF 1782 Set II 5 posts each of (ø 1.0 mm, ø 1.2 mm, ø 1.5 mm, ø 2.0 mm), 1 drill each of (ø 1.0 mm, ø 1.2 mm, ø 1.5 mm, ø 2.0 mm), Ceramic Bond bottle 5 ml, Futurabond U SingleDose 20 pcs., Rebilda DC QuickMix syringe 10 g dentine, accessories

VOCO GmbH
Anton-Flettner-Straße 1-3
27472 Cuxhaven
Germany

Freecall: 00 800 44 444 555
Fax: +49 (0) 4721-719-140

info@voco.com
www.voco.dental

Available from: