

ceram.x[®] duo Universal Nano-Ceramic Restorative

with
SphereTEC™
Filler Technology

Easy high-end esthetics just got easier

ceram.x[®] duo universal nano-ceramic composite replicates the translucency and chroma of natural teeth. The system combines just four dentin shades and three enamel shades using simple recipes to cover the entire 16-shade VITA^{®1} range and deliver natural, high-end esthetic results. Now with new and novel **SphereTEC™ filler technology** for enhanced handling properties, easy high-end esthetics just got easier.

.xcellent esthetics made easy

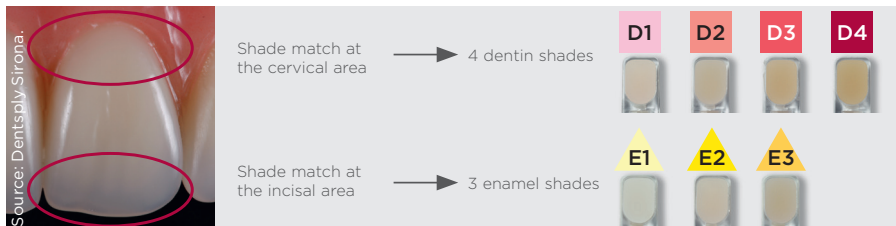
Ingenious simple shading system: 4 dentin and 3 enamel shades to cover the full VITA^{®1} shade range.

Shade guide

VITA ^{®1} Shade	A1	A2	A3	A3.5	A4	B1	B2	B3	B4	C1	C2	C3	C4	D2	D3	D4
Dentin Shade	D1	D2	D3	D3	D4	D1	D2	D3	D3	D2	D3	D3	D4	D2	D3	D3
Enamel Shade	E2	E2	E2	E3	E3	E1	E1	E3	E3	E2	E1	E2	E2	E2	E2	E1



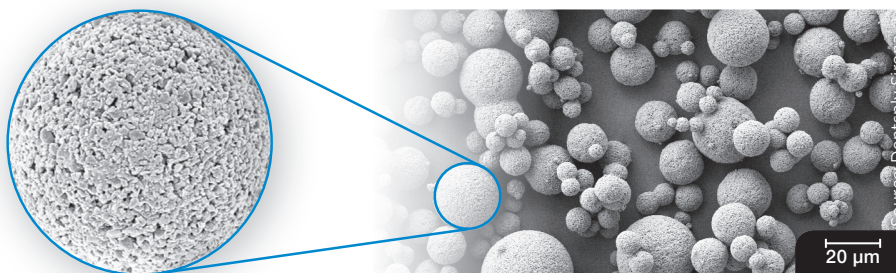
Shade recipes are consistent with original Ceram-X[®] Duo²



A bleach dentin shade (DB) is also available.

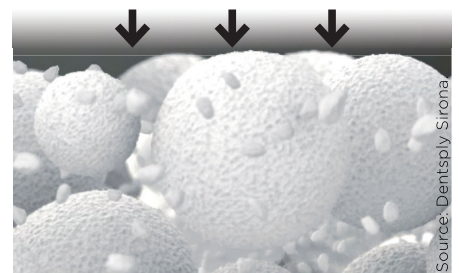
.xceptional handling

ceram.x[®] duo is based on the advanced granulated filler technology SphereTEC™ which is patent applied. SphereTEC™ stands for the process of manufacturing microscaled, well-defined spherical superstructures, comprising of submicron glass. The SphereTEC™ fillers' morphology, particle size distribution and surface microstructure are key for the enhanced handling comfort and esthetic outcome.

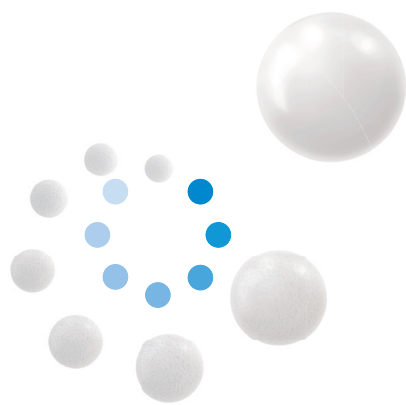


Microstructured surface of a SphereTEC™ filler ($d_{3,50} = 15 \mu\text{m}$), obtained via spray-granulation process from submicron glass fillers.

SEM picture showing SphereTEC™ spherical prepolymerised fillers providing a ball-bearing effect that enables excellent adaptation and sculptability.



The micro-granulated structure of SphereTEC™ is able to bind more free resin compared to usual fillers. Therefore ceram.x[®] does not stick to hand instruments.



ceram.x[®] duo

Universal Nano-Ceramic Restorative

NEW! Unique, SphereTEC™ technology takes ceram.x[®] duo handling to the next level. Spherical pre-polymerized glass fillers provide an enhanced composite handling experience.

**.xplore the new
filler technology**

Watch now!



- Excellent cavity adaptation and sculptability
- Improved slump resistance
- Doesn't stick to instruments
- Fast and easy polishing for outstanding esthetics results

Ordering Information

ceram.x[®] duo Introductory Kit



ceram.x[®] duo Compules[®] Tips **60701316A**
42 Compules[®] à 0.25 g
(9 x D2, D3, E2, 6 x E3, 3 x D1, D4, E1),
Accessories

ceram.x[®] duo Syringe **60701350A**
7 Syringe à 3 g
(shades D1, D2, D3, D4, E1, E2, E3)

ceram.x[®] duo Refills

Shades

Compules[®] Tips

16 x 0.25 g each

Syringe

1 x 3 g each



Dentin D1	60701301A	60701351A
Dentin D2	60701302A	60701352A
Dentin D3	60701303A	60701353A
Dentin D4	60701304A	60701354A
Dentin DB	60701305A	60701355A
Enamel E1	60701307A	60701357A
Enamel E2	60701308A	60701358A
Enamel E3	60701309A	60701359A

ceram.x[®] duo Shade Guide **60701565**

For more information visit www.dentsplysirona.com.

Find us on  www.facebook.com/dentsplysirona.restorative

K79200227-02
© Dentsply Sirona 11/2017