

Total Etch

The 37% phosphoric acid gel

The etching gel
for a
strong bond^[1]



Total Etch

The 37% phosphoric acid gel

Consistent viscosity

The viscosity of etching gels may be impaired when they are pressed through the tight nozzle of the dispensing tip. Conventional products often become runny and difficult to apply accurately. The gel flows into the cavity uncontrolled. Due to special filler composition, Total Etch has an ideal and above all consistent thickness that enables it to be applied quickly and effectively^[2].

Distinct blue colour

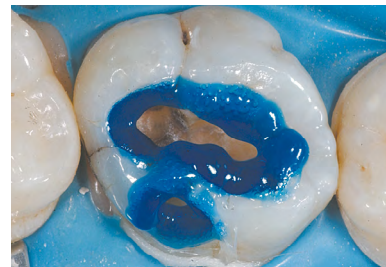
The blue colour provides a strong contrast to the tooth and allows the gel to be applied accurately. Residue is easy to recognize after rinsing, therefore, minimizing the risk of over-etching^[2].

Easy handling

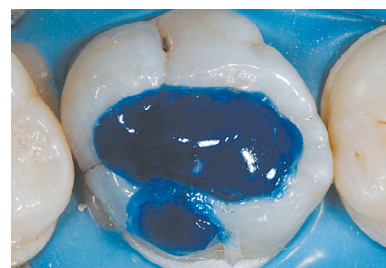
- Octagonal finger rest facilitates application and prevents syringe from rolling away^[2]
- Angled metal tip for exact application^[2]
- Special displacer to prevent material from being wasted^[2]

Efficient and economical use

The convenient Jumbo syringe, which is used to refill syringes, offers a cost-effective solution for keeping adequate amounts of gel in stock. Thanks to the Luer Lock system, the tip can be securely attached and a tight connection to the Jumbo syringe is ensured.



Total Etch is selectively applied to enamel. The blue colour providing a strong contrast to the tooth and its non-slump consistency make the gel easier to use^[1].



After a brief interval, Total Etch is also applied on dentin.



After it has been etched, rinsed and dried, the enamel has a chalky-white appearance, which aids the operator in checking the etching results^[2].

DELIVERY FORMS

Jumbo Assortment Total Etch

1 x 30 g / 2 x 2 g
Accessories



Refill Total Etch

2 x 2 g
Accessories



Tips

20 tips



^[1] D. Catel, *Test Report*, Ivoclar Vivadent, 2019

^[2] A. Peschke, *Test Report*, 2003

Ivoclar Vivadent AG
Benderstr. 2
9494 Schaan
Liechtenstein
Tel. +423 235 35 35
Fax +423 235 33 60
www.ivoclarvivadent.com

ivoclar
vivadent[®]
passion vision innovation