

BOND FORCE II



All-in-One – the reliable 7th generation adhesive.



Quick

Only 25 seconds – this is how quickly the adhesive conditioning of the cavity can succeed.

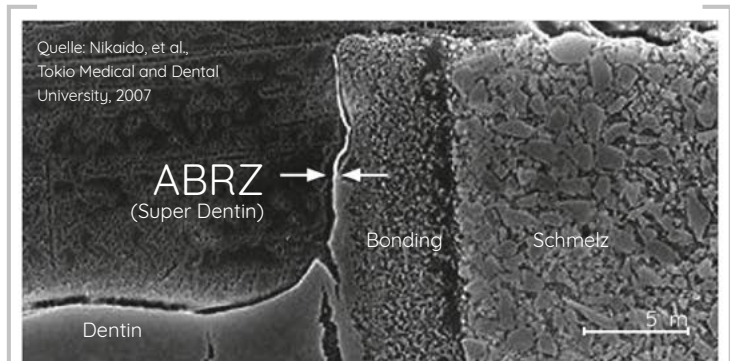
Reliable

The innovative 3D-SR-Monomer forms a uniformly thin film layer – optimal cavity adaptation.

Fluoride release

A constant release of fluoride from the adhesive protects against post-operative sensitivities and secondary caries.

Find out more:



Quelle: Nikaïdo, et al., Tokio Medical and Dental University, 2007

Super Dentin

Due to the chemical reactions of the functional monomer, so-called “super dentin” is formed in the adjacent dentin layer, which is resistant to acid and base attacks and thus protects the tooth from secondary caries.

Customers also bought this additional product:
ESTELITE Σ QUICK



More at COMPOSITES >> ESTELITE Σ QUICK

BOND FORCE II PEN

Ball pen

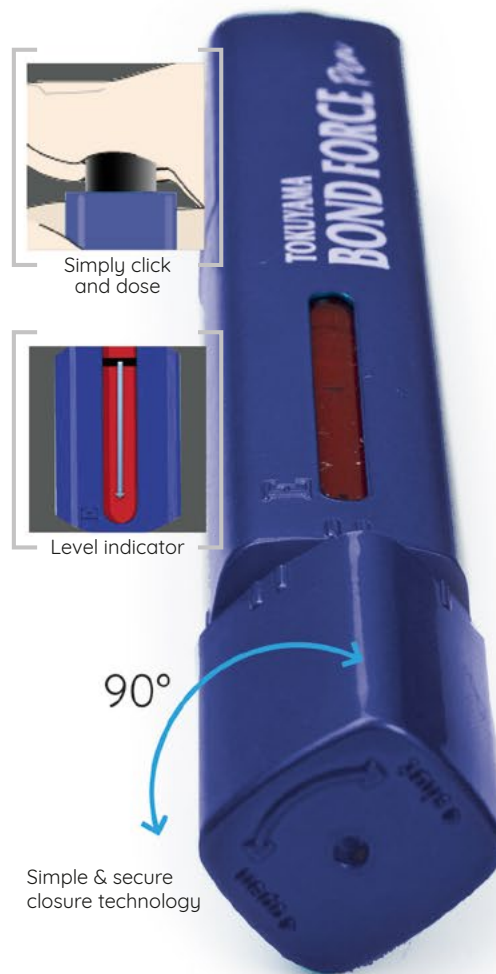
Easy to use – just 2 clicks are enough to dispense the required material in a hygienic and user-friendly way.

Safe'n Easy principle

The pen is securely closed with a simple twist of the cap. The filling level can be easily read in the viewing window.

Application quantity

The application quantity is always dispensed in uniform drops, so that optimal economical dosing is possible. This avoids surpluses and guarantees gentle handling of the material.



Find out more:



Customers also bought this additional product:
ESTELITE BULK FILL Flow

More at COMPOSITES >> ESTELITE BULK FILL Flow