

Intensiv Proxoshape

Universities of Zurich and Bern, Switzerland

Oscillating diamond-coated files for the removal of overhangs and finishing of proximal filling surfaces

Optimally adapted and polished proximal filling surfaces or crown margins are a prerequisite for health maintenance of the periodontium and prevention of secondary caries. Proxoshape meets the requirements for precise finishing of the filling surfaces and margins and prepares them for final polishing.

Ref. 100



Ref. 115



Product description

- 4 files for precise adaptation to tooth shape, one-sided diamond-coating along the entire head length, 4 different grits (125, 90, 40 and 15µm).
- 3 files with extended working area (grits 90, 40 and 15µm).
- 2 narrow files, 40 and 15µm grits.
- 1 distal diamond-coated file in 15µm grit, special file PS3G for polishing root surfaces with difficult access.

To be used in combination with Intensiv Swingle, WG-69 LT Cons (with light)

Indications

- Removal of:
 - Filling and cement overhangs
- Finishing and trimming of:
 - proximal crown margins in gold or ceramic
- Contouring and finishing of:
 - proximal restoration surfaces

Benefits

- Easier access to the interdental space
- No iatrogenic damage to adjacent teeth
- Prevention of surface wave generation caused by rotating burs

Intensiv Proxoshape Flexible

Clinically tested by the University of Zurich, Switzerland

Oscillating diamond-coated file for the removal of excess material and contouring of restored proximal surfaces

The contouring in aesthetic restorations in proximal zones is necessary to achieve an ideal morphology of the restoration. Appropriate instruments are required, which adapt perfectly to restoration surfaces while avoiding iatrogenic damage to adjacent tooth. The Intensiv Proxoshape Flexible file is, due to its minimal file thickness of 0.1mm, so thin that difficult to access interdental spaces can be treated.

Intensiv Proxoshape Flexible allows easier access to the interdental space. In addition, the thin file is sufficiently flexible to adapt to the partially concave surfaces.

Product description

- 3 single-sided diamond files in 60µm (brown), 40µm (red) and 15µm (yellow).
- 2 file lengths: 8.5mm and 11mm.
- Minimal file thickness 0.1mm.
- Sterilizable.

To be used in combination with Intensiv Swingle, WG-69 LT Cons (with light)

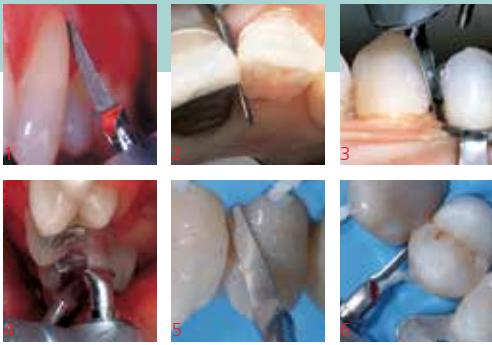
Indications

- Finishing and polishing of aesthetic restorations with difficult to access proximal areas
- Excess (filling-cements, overhangs) removal on restoration surfaces

Benefits

- Simplified access to the interdental space
- Improved adjustment to the proximal filling morphology
- No iatrogenic damage to adjacent tooth due to one side diamond-coating
- Prevention of irregular surface waves created by use of rotating instruments

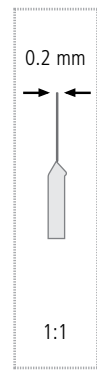




- 1) Finishing of the cervical filling margin with instrument PS2L
- 2) Finishing of proximal composite filling with instrument PS2
- 3) Removal of proximal filling excesses of amalgam restorations with instrument PS1
- 4) Removal of proximal filling excesses of amalgam restoration with instrument PS1 (buccal perspective)
- 5) Finishing of the filling in the proximal area with file PS2
- 6) Contouring of the surface below the restored contact point without damaging the adjacent tooth with file PS3

New!
Proxoshape
Coarse

L mm	8.5	8.5	8.5	8.5	11.0	11.0	11.0	8.5	8.5	3	8.5	
µm	125	90	40	15	90	40	15	40	15	15	80	
524		PS1			PS1L							
534	■	PS0										
524	■											PSC80
514	■		PS2			PS2L		PS2S				
504	■			PS3			PS3L		PS3S		PS3G	



1-3) Clinical pictures: University of Zurich, Switzerland

New

Ref. 110						
L mm	8.5	8.5	8.5	11.0	11.0	11.0
µm	60	40	15	60	40	15
514	■	PSF60		PSF60L		
514	■		PSF40		PSF40L	
504	■			PSF15		PSF15L

