



# GLASSIX<sup>®</sup>+plus

## Radiopaque & Light transmitting Fiber post

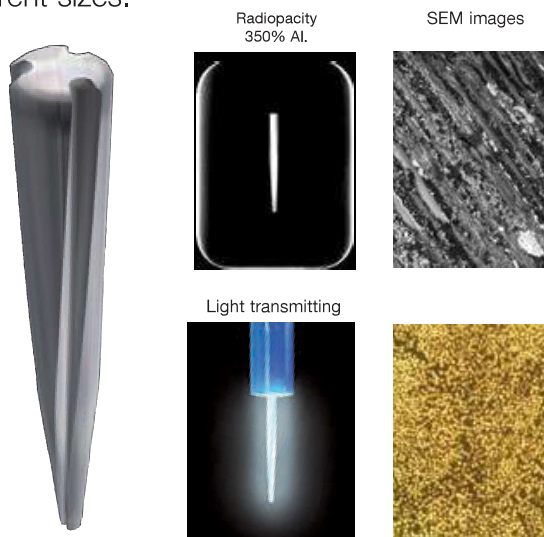
Glassix+plus is the latest generation of highly radiopaque and light transmitting fiber post. Anatomically shaped to fit the root canal (cylindro-conical) with a colour coding for easy identification and mechanical retentions they come in 4 different sizes.

**Indication:**

For corono-radicular reconstructions.

**Advantages:**

- Optimal radiopacity (350%Al.)
- Light conducting for the use of Dual curing resin cements.
- Anatomically shaped with a helicoidal structure - twisted groves - that gives mechanical retention without any breakage points.
- Elasticity close to natural dentine (20 Gpa)
- Enhanced mechanical properties (1600Mpa)
- Aesthetic thanks to its translucent matrix.
- 100% biocompatible- epoxy free.



**GLASSIX+plus** is supplied in a kit with 4x5 Glassix +plus + 4x1 Reamer + 1 Pilot Reamer



02-301

**GLASSIX+plus** is also available in refills of 10 pcs each size.

- Glassix +plus Refill No. 1: Ø 1.2 - Ø 0.6 mm.
- Glassix +plus Refill No. 2: Ø 1.5 - Ø 0.8 mm.
- Glassix +plus Refill No. 3: Ø 1.8 - Ø 0.9 mm.
- Glassix +plus Refill No. 4: Ø 2.0 - Ø 1.0 mm.



1. After completed endo treatment, open canal with pilot reamer.



2. Calibrate canal with Glassix + plus reamer.



3. Insert post for fit.



4. Etching.



5. Dry with paper points.



6. Apply layer of bonding.



7. Insert post, cement and light cure.



8. Post is cemented and build up started.



9. Finished work.

Images by Dr Nicolas Bois  
 Informations provided by NORDIN SA

**Diametrical Tensile Strength (Mpa)**



**Young's Modulus of Elasticity (Gpa)**

